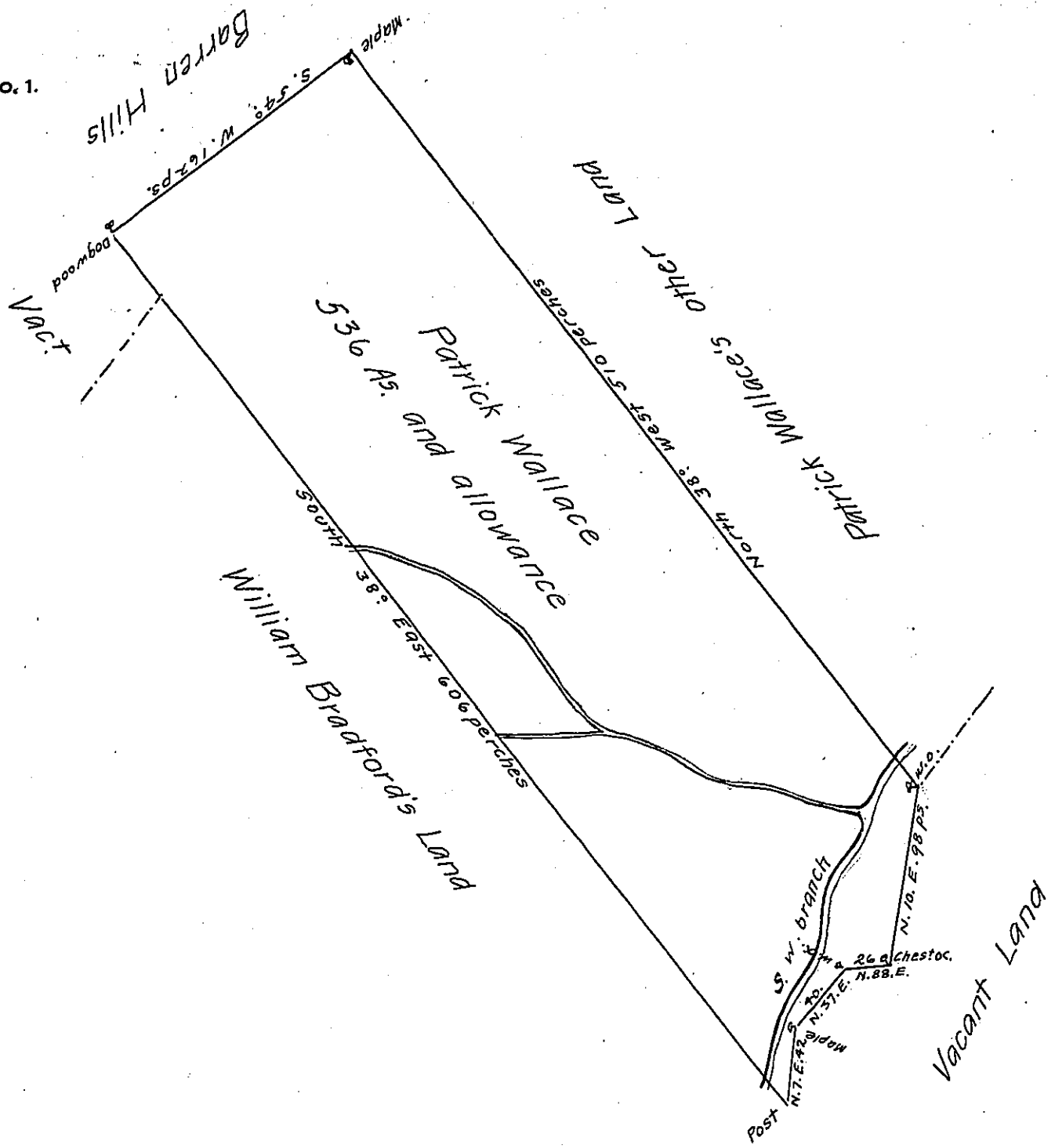


FORM No. 1.



A Draught of a Tract of Land situate on the South West branch of Dunning's Creek in the County of Cumberland, containing Five hundred and thirty six acres and the usual allowance of six acres p. Ct. for Roads &c. Surveyed the 20th day of May 1765 for Patrick Wallace in pursuance of a Warrant dated the 3d. day of June 1763.

p-Richard Tea Depy. Surveyr.

To John Lukens Esqr Surveyr Genl

IN TESTIMONY that the above is a copy of the original remaining on file in the Department of Internal Affairs of Pennsylvania, made conformably to an Act of Assembly approved the 16th day of February 1833, I have hereunto set my hand and caused the Seal of said Department to be affixed at Harrisburg, this twenty-third day of April 1907

Isaac D. Brown
Secretary of Internal Affairs.